

Arco abajo se escribe así ----> ▢

Arco arriba se escribe así ----> ▽

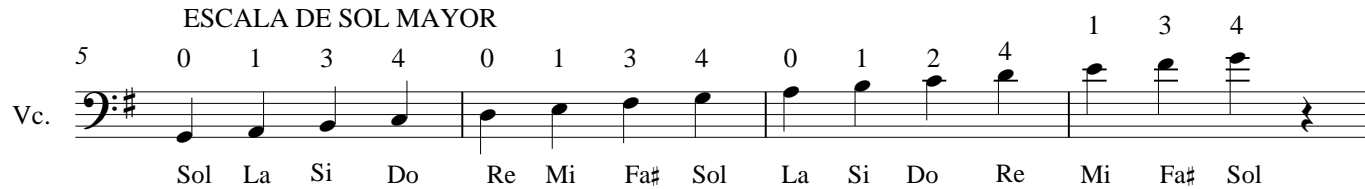
ESCALA DE DO MAYOR

www.maestrodellviolonchelo.com

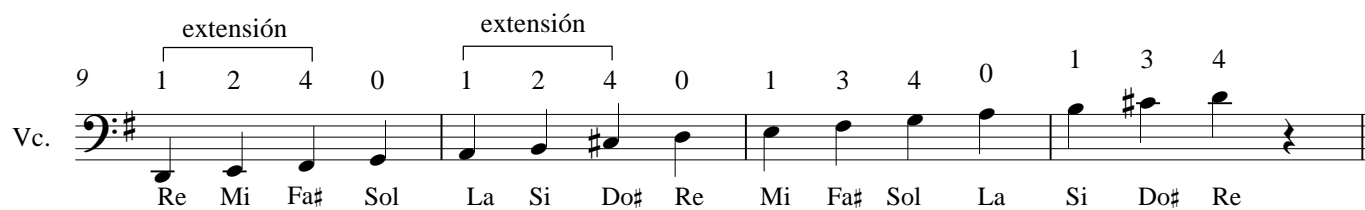
Dedos de la mano izquierda -> 0 1 3 4 0 1 3 4 0 1 2 4 0 1 2



ESCALA DE SOL MAYOR



ESCALA DE RE MAYOR



CAMPANITAS DE LUGAR (VARIACIONES)

CANCIÓN ORIGINAL

WWW.MAESTRODELVIOLONCHELO.COM

VIOLONCELLO



Violoncello staff with notes and fingerings: 0 0 0 0 | 1 1 0 | 4 4 3 3 | 1 1 0

5

0 0 4 4 3 3 1 0 0 4 4 3 3 1

vc.

9

0 0 0 0 1 1 0 4 4 3 3 1 1 0

vc.

0 0 0 0 1 1 0 4 4 3 3 1 1 0

VARIACIÓN 1

14

VC.

4/4

14

15

16

17

18

19

20

21

22

23

24

25

26

27

28

29

30

31

32

33

34

35

36

37

38

39

40

41

42

43

44

45

46

47

48

49

50

51

52

53

54

55

56

57

58

59

60

61

62

63

64

65

66

67

68

69

70

71

72

73

74

75

76

77

78

79

80

81

82

83

84

85

86

87

88

89

90

91

92

93

94

95

96

97

98

99

100

101

102

103

104

105

106

107

108

109

110

111

112

113

114

115

116

117

118

119

120

121

122

123

124

125

126

127

128

129

130

131

132

133

134

135

136

137

138

139

140

141

142

143

144

145

146

147

148

149

150

151

152

153

154

155

156

157

158

159

160

161

162

163

164

165

166

167

168

169

170

171

172

173

174

175

176

177

178

179

180

181

182

183

184

185

186

187

188

189

190

191

192

193

194

195

196

197

198

199

200

201

202

203

204

205

206

207

208

209

210

211

212

213

214

215

216

217

218

219

220

221

222

223

224

225

226

227

228

229

230

231

232

233

234

235

236

237

238

239

240

241

242

243

244

245

246

247

248

249

250

251

252

253

254

255

256

257

258

259

260

261

262

263

264

265

266

267

268

269

270

271

272

273

274

275

276

277

278

279

280

281

282

283

284

285

286

287

288

289

290

291

292

293

294

295

296

297

298

299

300

301

302

303

304

305

306

307

308

309

310

311

312

313

314

315

316

317

318

319

320

321

322

323

324

325

326

327

328

329

330

331

332

333

334

335

336

337

338

339

340

341

342

343

344

345

346

347

348

349

350

351

352

353

354

355

356

357

358

359

360

361

362

363

364

365

366

367

368

369

370

371

372

373

374

375

376

377

378

379

380

381

382

383

384

385

386

387

388

389

390

391

392

393

394

395

396

397

398

399

400

401

402

403

404

405

406

407

408

409

410

411

412

413

414

415

416

417

418

419

420

421

422

423

424

425

426

427

428

429

430

431

432

433

434

435

436

437

438

439

440

441

442

443

444

445

446

447

448

449

450

451

452

453

454

455

456

457

458

459

460

461

462

463

464

465

466

467

468

469

470

471

472

473

474

475

476

477

478

479

480

481

482

483

484

485

486

487

488

489

490

491

492

493

494

495

496

497

498

499

500

501

502

503

504

505

506

507

508

509

510

511

512

513

514

515

516

517

518

519

520

521

522

523

524

525

526

527

528

529

530

531

532

533

18

vc.

Musical score for Violoncello (vc.) in G major, measures 18-21. The notation is on a single staff in bass clef with one sharp (F#). The melody consists of quarter notes in measures 18 and 19, and eighth notes in measures 20 and 21. The notes are G2, A2, B2, C3 in measure 18; D3, E3, F#3, G3 in measure 19; A3, B3, C4, D4 in measure 20; and E4, F#4, G4, A4 in measure 21.

22

Vc.

Musical score for Violoncello (Vc.) in 2/4 time. The key signature has two sharps (F# and C#). The melody starts on a whole note G2, followed by a half note A2, then a half note B2. The next measure contains a half note C3, a half note D3, and a half note E3. The final measure contains a half note F#3, a half note G3, and a half note A3. The piece ends with a double bar line.

VARIACIÓN 2

26

VC.

Violoncello 2

30

Vc.

Musical score for Violoncello (Vc.) in 2/4 time. The key signature has one sharp (F#). The melody consists of eighth and quarter notes. The notes are: F#4, G4, A4, B4, C5, B4, A4, G4, F#4, E4, D4, C4, B3, A3, G3, F#3, E3, D3, C3, B2, A2, G2, F#2, E2, D2, C2, B1, A1, G1, F#1, E1, D1, C1, B0, A0, G0, F#0, E0, D0, C0, B-1, A-1, G-1, F#-1, E-1, D-1, C-1, B-2, A-2, G-2, F#-2, E-2, D-2, C-2, B-3, A-3, G-3, F#-3, E-3, D-3, C-3, B-4, A-4, G-4, F#-4, E-4, D-4, C-4, B-5, A-5, G-5, F#-5, E-5, D-5, C-5, B-6, A-6, G-6, F#-6, E-6, D-6, C-6, B-7, A-7, G-7, F#-7, E-7, D-7, C-7, B-8, A-8, G-8, F#-8, E-8, D-8, C-8, B-9, A-9, G-9, F#-9, E-9, D-9, C-9, B-10, A-10, G-10, F#-10, E-10, D-10, C-10, B-11, A-11, G-11, F#-11, E-11, D-11, C-11, B-12, A-12, G-12, F#-12, E-12, D-12, C-12, B-13, A-13, G-13, F#-13, E-13, D-13, C-13, B-14, A-14, G-14, F#-14, E-14, D-14, C-14, B-15, A-15, G-15, F#-15, E-15, D-15, C-15, B-16, A-16, G-16, F#-16, E-16, D-16, C-16, B-17, A-17, G-17, F#-17, E-17, D-17, C-17, B-18, A-18, G-18, F#-18, E-18, D-18, C-18, B-19, A-19, G-19, F#-19, E-19, D-19, C-19, B-20, A-20, G-20, F#-20, E-20, D-20, C-20, B-21, A-21, G-21, F#-21, E-21, D-21, C-21, B-22, A-22, G-22, F#-22, E-22, D-22, C-22, B-23, A-23, G-23, F#-23, E-23, D-23, C-23, B-24, A-24, G-24, F#-24, E-24, D-24, C-24, B-25, A-25, G-25, F#-25, E-25, D-25, C-25, B-26, A-26, G-26, F#-26, E-26, D-26, C-26, B-27, A-27, G-27, F#-27, E-27, D-27, C-27, B-28, A-28, G-28, F#-28, E-28, D-28, C-28, B-29, A-29, G-29, F#-29, E-29, D-29, C-29, B-30, A-30, G-30, F#-30, E-30, D-30, C-30, B-31, A-31, G-31, F#-31, E-31, D-31, C-31, B-32, A-32, G-32, F#-32, E-32, D-32, C-32, B-33, A-33, G-33, F#-33, E-33, D-33, C-33, B-34, A-34, G-34, F#-34, E-34, D-34, C-34, B-35, A-35, G-35, F#-35, E-35, D-35, C-35, B-36, A-36, G-36, F#-36, E-36, D-36, C-36, B-37, A-37, G-37, F#-37, E-37, D-37, C-37, B-38, A-38, G-38, F#-38, E-38, D-38, C-38, B-39, A-39, G-39, F#-39, E-39, D-39, C-39, B-40, A-40, G-40, F#-40, E-40, D-40, C-40, B-41, A-41, G-41, F#-41, E-41, D-41, C-41, B-42, A-42, G-42, F#-42, E-42, D-42, C-42, B-43, A-43, G-43, F#-43, E-43, D-43, C-43, B-44, A-44, G-44, F#-44, E-44, D-44, C-44, B-45, A-45, G-45, F#-45, E-45, D-45, C-45, B-46, A-46, G-46, F#-46, E-46, D-46, C-46, B-47, A-47, G-47, F#-47, E-47, D-47, C-47, B-48, A-48, G-48, F#-48, E-48, D-48, C-48, B-49, A-49, G-49, F#-49, E-49, D-49, C-49, B-50, A-50, G-50, F#-50, E-50, D-50, C-50, B-51, A-51, G-51, F#-51, E-51, D-51, C-51, B-52, A-52, G-52, F#-52, E-52, D-52, C-52, B-53, A-53, G-53, F#-53, E-53, D-53, C-53, B-54, A-54, G-54, F#-54, E-54, D-54, C-54, B-55, A-55, G-55, F#-55, E-55, D-55, C-55, B-56, A-56, G-56, F#-56, E-56, D-56, C-56, B-57, A-57, G-57, F#-57, E-57, D-57, C-57, B-58, A-58, G-58, F#-58, E-58, D-58, C-58, B-59, A-59, G-59, F#-59, E-59, D-59, C-59, B-60, A-60, G-60, F#-60, E-60, D-60, C-60, B-61, A-61, G-61, F#-61, E-61, D-61, C-61, B-62, A-62, G-62, F#-62, E-62, D-62, C-62, B-63, A-63, G-63, F#-63, E-63, D-63, C-63, B-64, A-64, G-64, F#-64, E-64, D-64, C-64, B-65, A-65, G-65, F#-65, E-65, D-65, C-65, B-66, A-66, G-66, F#-66, E-66, D-66, C-66, B-67, A-67, G-67, F#-67, E-67, D-67, C-67, B-68, A-68, G-68, F#-68, E-68, D-68, C-68, B-69, A-69, G-69, F#-69, E-69, D-69, C-69, B-70, A-70, G-70, F#-70, E-70, D-70, C-70, B-71, A-71, G-71, F#-71, E-71, D-71, C-71, B-72, A-72, G-72, F#-72, E-72, D-72, C-72, B-73, A-73, G-73, F#-73, E-73, D-73, C-73, B-74, A-74, G-74, F#-74, E-74, D-74, C-74, B-75, A-75, G-75, F#-75, E-75, D-75, C-75, B-76, A-76, G-76, F#-76, E-76, D-76, C-76, B-77, A-77, G-77, F#-77, E-77, D-77, C-77, B-78, A-78, G-78, F#-78, E-78, D-78, C-78, B-79, A-79, G-79, F#-79, E-79, D-79, C-79, B-80, A-80, G-80, F#-80, E-80, D-80, C-80, B-81, A-81, G-81, F#-81, E-81, D-81, C-81, B-82, A-82, G-82, F#-82, E-82, D-82, C-82, B-83, A-83, G-83, F#-83, E-83, D-83, C-83, B-84, A-84, G-84, F#-84, E-84, D-84, C-84, B-85, A-85, G-85, F#-85, E-85, D-85, C-85, B-86, A-86, G-86, F#-86, E-86, D-86, C-86, B-87, A-87, G-87, F#-87, E-87, D-87, C-87, B-88, A-88, G-88, F#-88, E-88, D-88, C-88, B-89, A-89, G-89, F#-89, E-89, D-89, C-89, B-90, A-90, G-90, F#-90, E-90, D-90, C-90, B-91, A-91, G-91, F#-91, E-91, D-91, C-91, B-92, A-92, G-92, F#-92, E-92, D-92, C-92, B-93, A-93, G-93, F#-93, E-93, D-93, C-93, B-94, A-94, G-94, F#-94, E-94, D-94, C-94, B-95, A-95, G-95, F#-95, E-95, D-95, C-95, B-96, A-96, G-96, F#-96, E-96, D-96, C-96, B-97, A-97, G-97, F#-97, E-97, D-97, C-97, B-98, A-98, G-98, F#-98, E-98, D-98, C-98, B-99, A-99, G-99, F#-99, E-99, D-99, C-99, B-100, A-100, G-100, F#-100, E-100, D-100, C-100, B-101, A-101, G-101, F#-101, E-101, D-101, C-101, B-102, A-102, G-102, F#-102, E-102, D-102, C-102, B-103, A-103, G-103, F#-103, E-103, D-103, C-103, B-104, A-104, G-104, F#-104, E-104, D-104, C-104, B-105, A-105, G-105, F#-105, E-105, D-105, C-105, B-106, A-106, G-106, F#-106, E-106, D-106, C-106, B-107, A-107, G-107, F#-107, E-107, D-107, C-107, B-108, A-108, G-108, F#-108, E-108, D-108, C-108, B-109, A-109

34

vc.

34

Cumpleaños feliz

www.maestrodelviolonchelo.com

Violoncello

Cuerda Re

Cuerda La

0 0 1 0 4 3 0 0 1 0 0

Re Re Mi Re Sol Fa Re Re Mi Re La

Vc.

5

Cuerda Re

Cuerda La

Cuerda Re

Cuerda La

Cuerda Re

Cuerda La

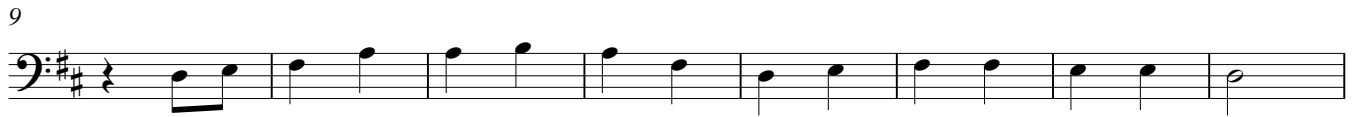
Cuerda Re

4 0 0 4 1 4 3 1 2 2 1 4 0 4

Sol Re Re Re Si Sol Fa# Mi Do Do Si Sol La Sol

Oh Susana

www.maestrodelviolonchelo.com



Yesterday

www.maestrodelviolonchelo.com

Violoncello

0 4 4 1 2 4 extensión 0 1 2 1 0 0

Detailed description: This block shows the first three measures of the cello part. Measure 1 contains a half note G2 (fingering 0), a quarter note A2 (fingering 4), and a half note G2 (fingering 4). Measure 2 contains a half note F#2 (fingering 1), a quarter note G2 (fingering 2), and a half note A2 (fingering 4). Measure 3 contains a half note G2 (fingering 0), a quarter note F#2 (fingering 1), and a half note E2 (fingering 2). The word 'extensión' is written above the second measure.

4

0 0 4 2 1 0 2 1 1 0 4 1 0 1 4 1 1

Detailed description: This block shows measures 4 through 7. Measure 4: half note G2 (0), quarter note A2 (0), half note G2 (4). Measure 5: half note F#2 (2), quarter note E2 (1), half note D2 (0). Measure 6: half note C2 (2), quarter note B1 (1), half note A1 (1). Measure 7: half note G1 (0), quarter note F#1 (4), half note E1 (1). Measure 8: half note D1 (4), quarter note C1 (1), half note B1 (1).

8

1 1 0 1 2 1 0 1 0 4 0 1

Detailed description: This block shows measures 8 through 11. Measure 8: half note G1 (1), quarter note F#1 (1), half note E1 (0). Measure 9: half note D1 (1), quarter note C1 (2), half note B1 (1). Measure 10: half note A1 (0), quarter note G1 (1), half note F#1 (0). Measure 11: half note E1 (4), quarter note D1 (0), half note C1 (1).

12

1 1 0 1 2 1 0 1 0 4 1 2 4 2 1

Detailed description: This block shows measures 12 through 15. Measure 12: half note G1 (1), quarter note F#1 (1), half note E1 (0). Measure 13: half note D1 (1), quarter note C1 (2), half note B1 (1). Measure 14: half note A1 (0), quarter note G1 (1), half note F#1 (0). Measure 15: half note E1 (4), quarter note D1 (1), half note C1 (2). Measure 16: half note B1 (4), quarter note A1 (2), half note G1 (1).

16

0 4 4 1 2 4 extensión 0 1 2 1 0 0

Detailed description: This block shows measures 16 through 18. Measure 16: half note G2 (0), quarter note A2 (4), half note G2 (4). Measure 17: half note F#2 (1), quarter note G2 (2), half note A2 (4). Measure 18: half note G2 (0), quarter note F#2 (1), half note E2 (2). Measure 19: half note G2 (1), quarter note F#2 (0), half note E2 (0).

19

0 0 4 2 1 0 2 1 1 0 4 1 0 1 4 1 1

Detailed description: This block shows measures 19 through 22. Measure 19: half note G2 (0), quarter note A2 (0), half note G2 (4). Measure 20: half note F#2 (2), quarter note E2 (1), half note D2 (0). Measure 21: half note C2 (2), quarter note B2 (1), half note A2 (1). Measure 22: half note G2 (0), quarter note F#2 (4), half note E2 (1). Measure 23: half note D2 (4), quarter note C2 (1), half note B2 (1).